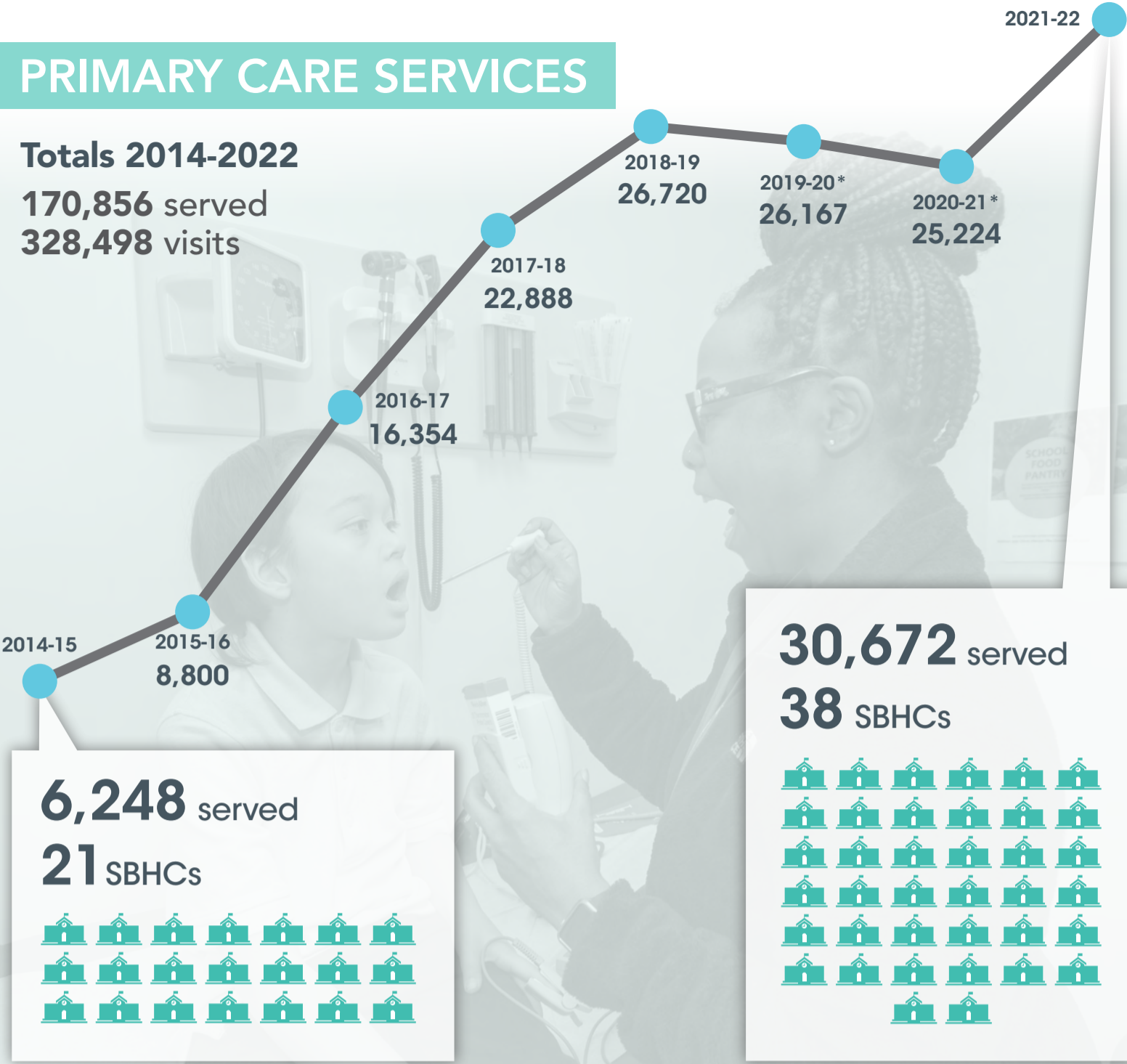


SBHCs BY THE NUMBERS

(By school year)

PRIMARY CARE SERVICES

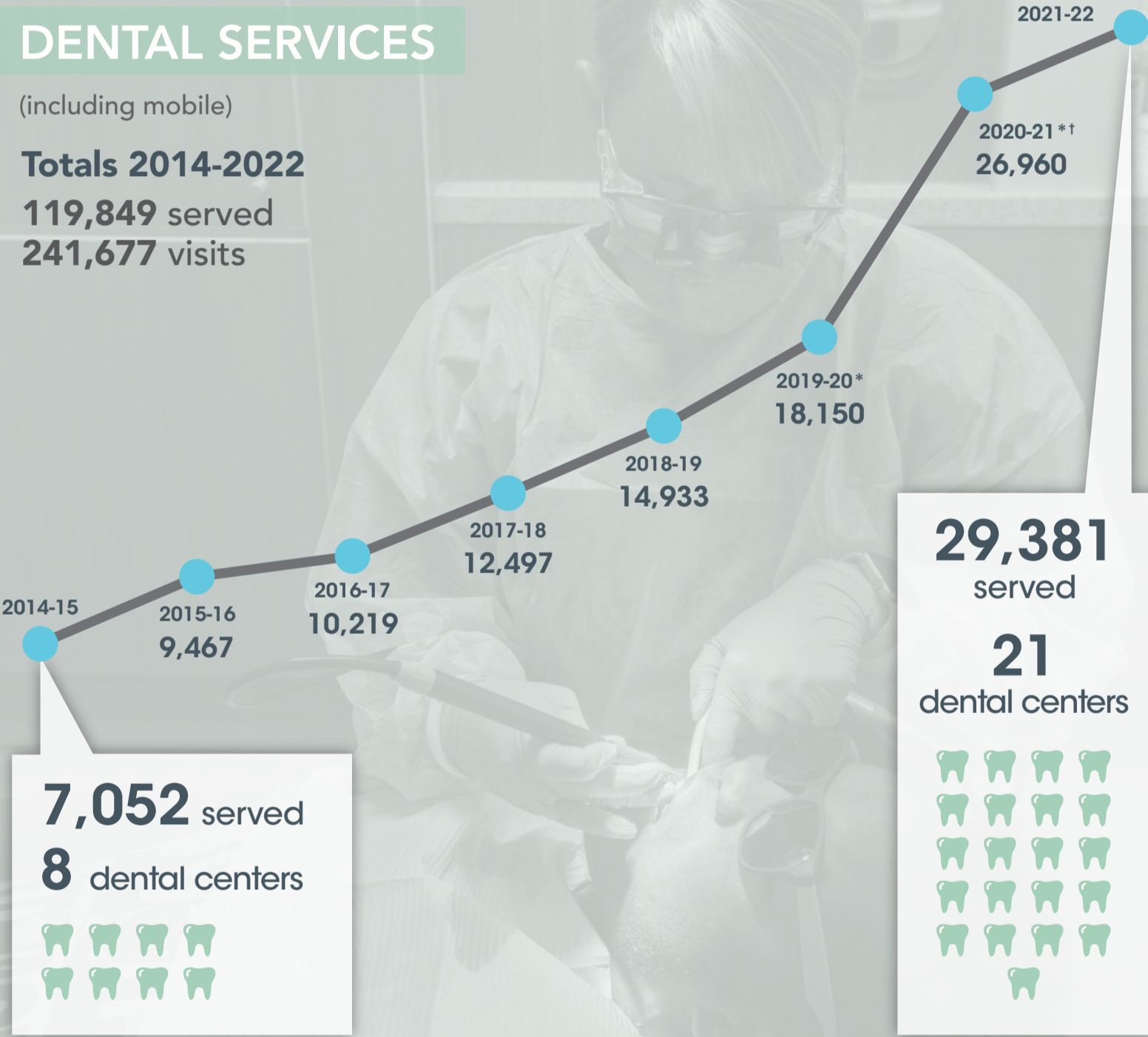
Totals 2014-2022
170,856 served
328,498 visits



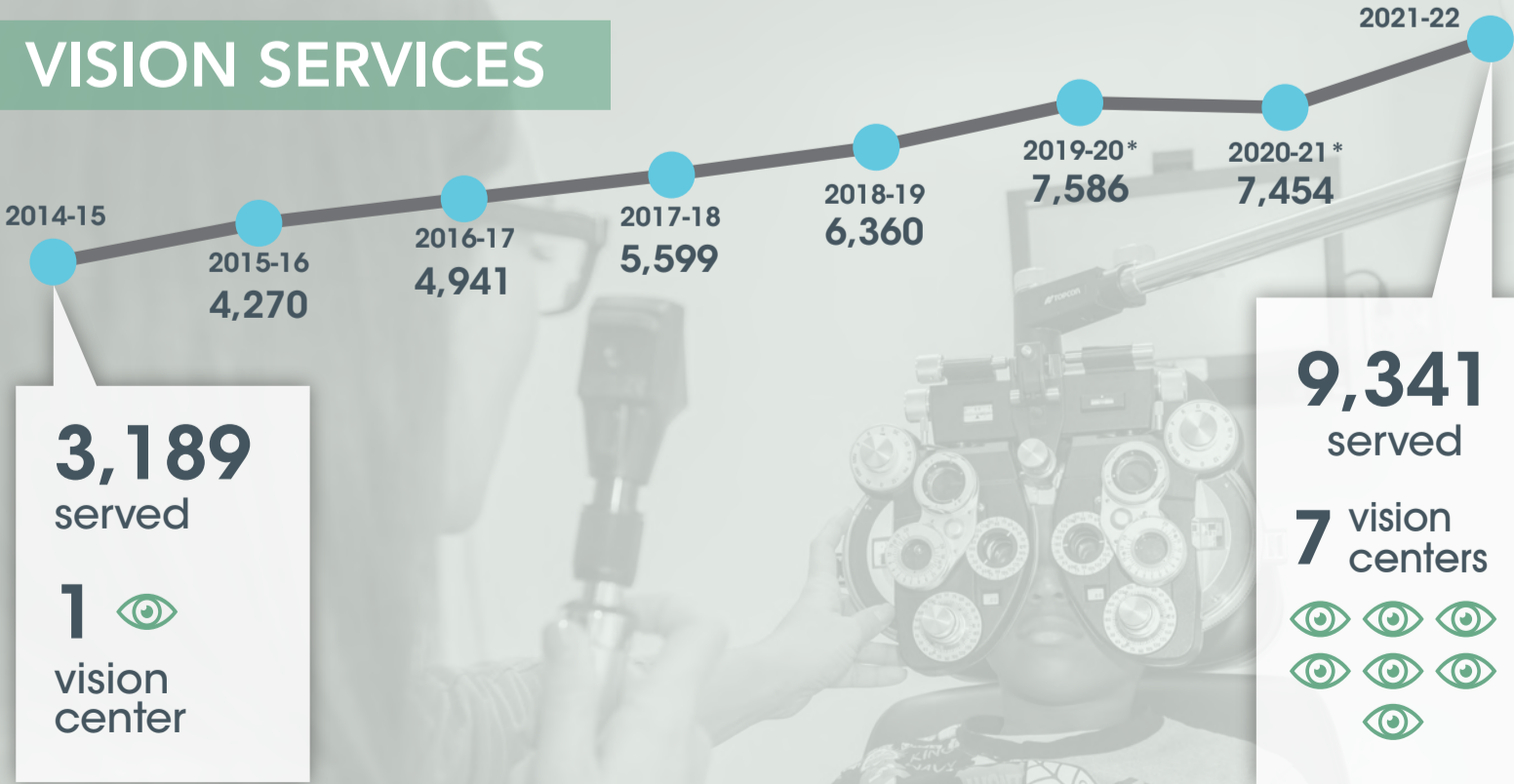
DENTAL SERVICES

(including mobile)

Totals 2014-2022
119,849 served
241,677 visits



VISION SERVICES



Total 2014-2022 | 48,740 served

*School closures because of the COVID-19 pandemic affected 2019-20 and 2020-21 numbers.

†Cincinnati Health Department began reporting adult visits in 2020-21.